



**CONSOLIDATED**  
TIN MINES LTD

Investing in Tin Seminar  
London

5<sup>th</sup> December 2011

# Disclaimer

*This presentation has been prepared by Consolidated Tin Mines Ltd (CSD) based on information from its own and third party sources and is not a disclosure document. By retaining this Presentation, you (the Recipient) acknowledge and represent to CSD that you have read, understood and accept the terms of this Important Notice. If you do not accept these terms, you should immediately destroy or delete this Presentation. This Presentation does not purport to contain all information that a prospective investor may require in connection with any potential investment in CSD. Each Recipient must make its own independent assessment of CSD before acquiring any securities in CSD ("Securities"). You should not treat the contents of this Presentation, or any information provided in connection with it, as financial advice, financial product advice or advice relating to legal, taxation or investment matters. Before acquiring any Securities, you should consult your own advisers and conduct your own investigation and analysis in relation to CSD.*

*No representation or warranty is made by CSD or any of its advisers, agents or employees as to the accuracy, completeness or reasonableness of the information in this Presentation or provided in connection with it. No information contained in this Presentation or any other written or oral communication in connection with it is, or shall be relied upon as, a promise or representation and no representation or warranty is made as to the accuracy or attainability of any estimates, forecasts or projections set out in this Presentation. No liability will attach to CSD or its advisers with respect to any such information, estimates, forecasts or projections. CSD does not accept responsibility or liability for any loss or damage suffered or incurred by you or any other person or entity however caused (including, without limitation, negligence) relating in any way to this Presentation including, without limitation, the information contained in or provided in connection with it, any errors or omissions from it however caused (including without limitation, where caused by third parties), lack of accuracy, completeness, currency or reliability or you, or any other person or entity, placing any reliance on this Presentation, its accuracy, completeness, currency or reliability. CSD does not accept any responsibility to inform you on any matter arising or coming to CSD's notice after the date of this Presentation which may affect any matter referred to in this Presentation. Any liability of CSD, its advisers, agents and employees to you or to any other person or entity arising out of this Presentation including pursuant to the Australian Securities and Investments Commission Act, 2001, Corporations Act 2001 and the Trade Practices Act 1974 or any other applicable law is, to the maximum extent permitted by law, expressly disclaimed and excluded. The distribution of this Presentation may be restricted by law in certain jurisdictions. Recipients, and any other persons who come into possession of this Presentation must inform themselves about, and observe any such restrictions.*

## **Future Matters**

*This Presentation contains reference to certain intentions, expectations, future plans, strategy and prospects of CSD. Those intentions, expectations, future plans, strategy and prospects may or may not be achieved. They are based on certain assumptions, which may not be met or on which views may differ and may be affected by known and unknown risks. The performance and operations of CSD may be influenced by a number of factors, many of which are outside the control of CSD. No representation or warranty, express or implied, is made by CSD or any of its directors, officers, employees, advisers or agents that any intentions, expectations or plans will be achieved either totally or partially or that any particular rate of return will be achieved. Given the risks and uncertainties that may cause CSD's actual future results, performance or achievements to be materially different from those expected, planned or intended, Recipients should not place undue reliance on these intentions, expectations, future plans, strategy and prospects. CSD does not warrant or represent that the actual results, performance or achievements will be as expected, planned or intended.*



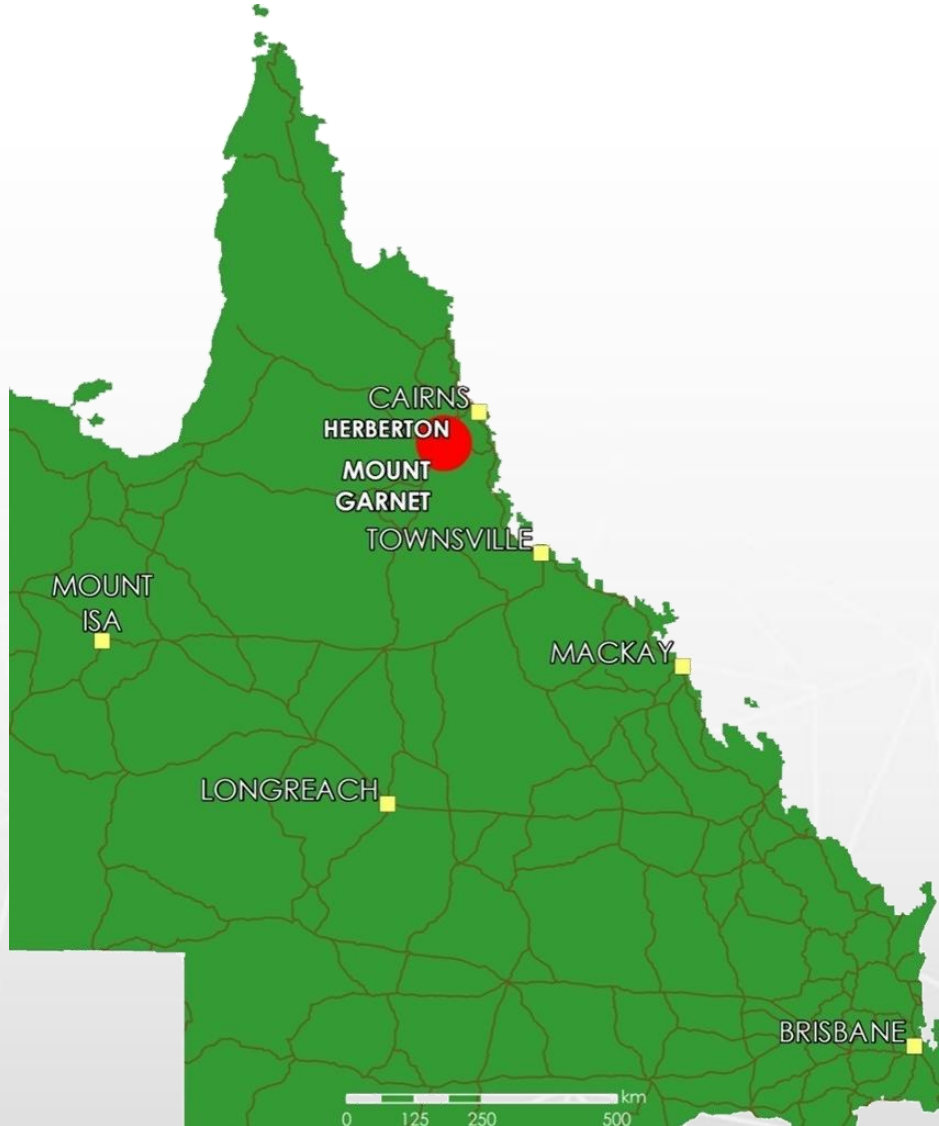
**NEW TIN SUPPLY FROM THE  
HISTORIC HERBERTON TINFIELDS  
AUSTRALIA**



# Herberton Tinfields

**CONSOLIDATED**  
TIN MINES LTD

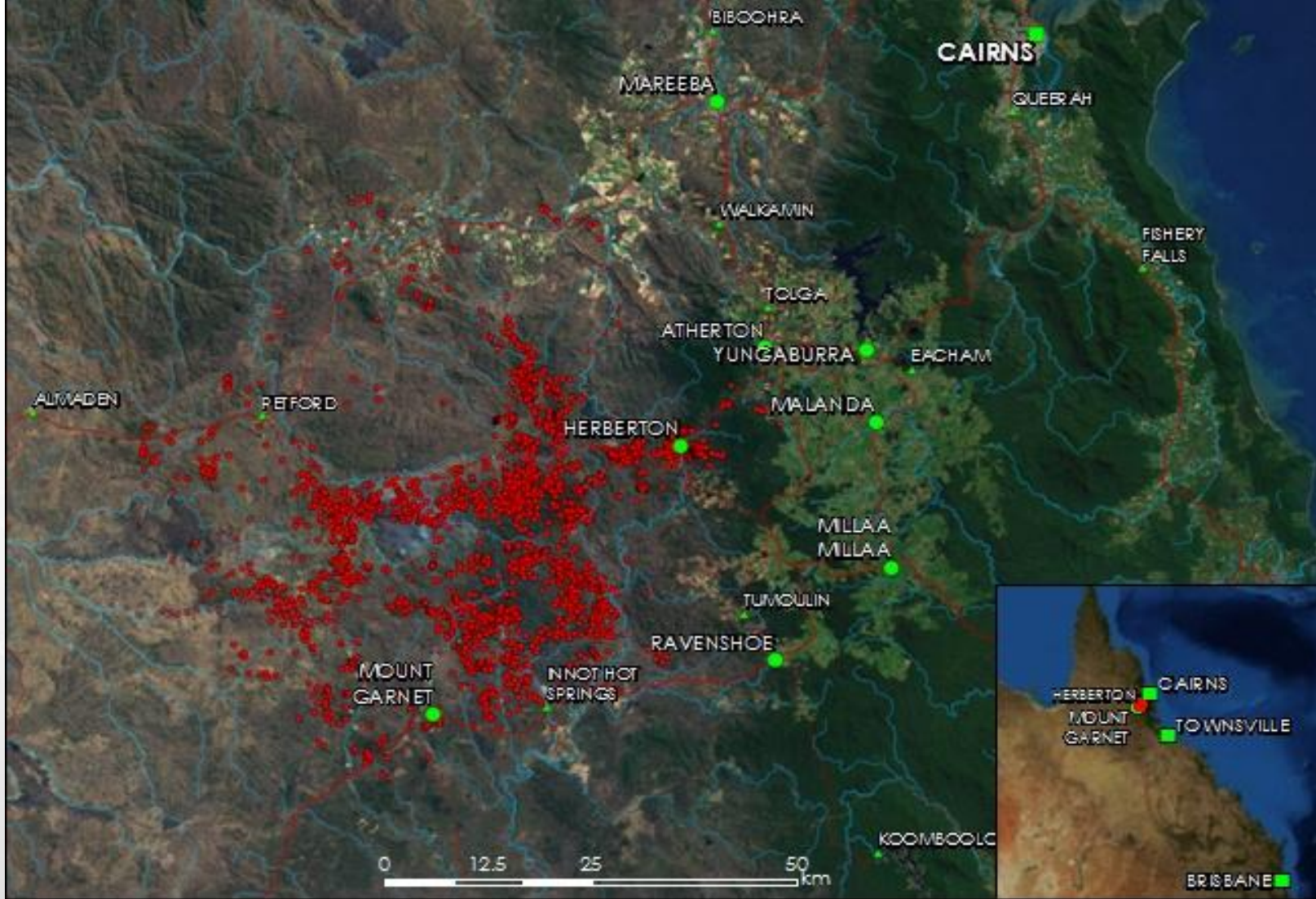
Queensland, Australia, showing Herberton Tin Field to scale



- Mining commenced 1879 on very high grade, decreasing over the 100+ years of mining
- Over 2,000 named mines. Mining stopped 1985 due to tin price collapse. No operating tin mines today
- Over 5,000km<sup>2</sup> of tin mineralisation. Massive potential for a 'second generation' mining large volume/low grade tin
- Significant volumes of low grade open pit minable ore remains
- Enormous Potential for central mill with economy of scale to process next generation tin ore

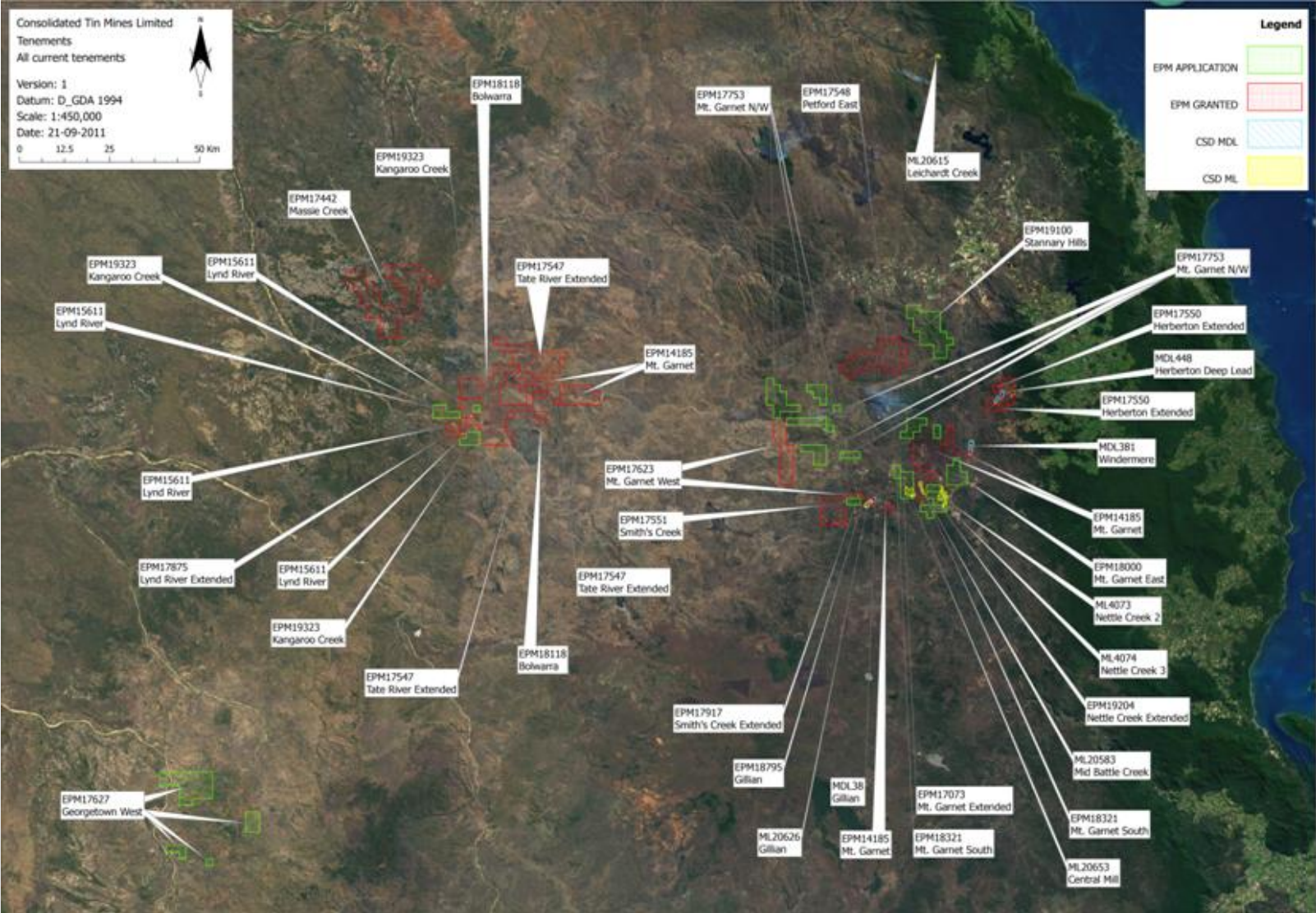
# Herberton Tinfields

Over 2,000 named Historic Tin Mines

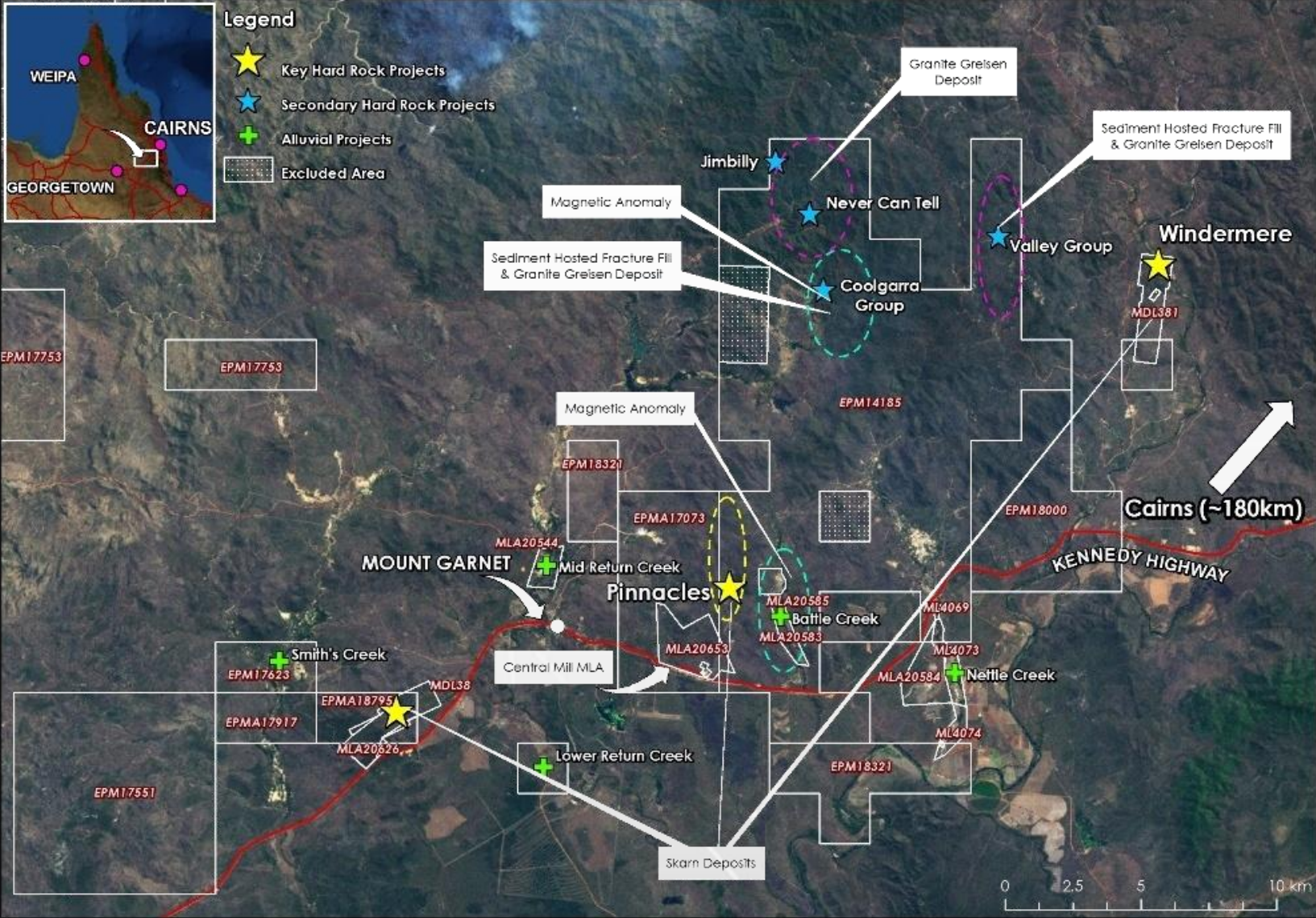


# Large area held by CSD

Total area held 1,508,600 Ha



# Key Project Location



# Project Overview

- Current focus outcropping skarn mineralisation, iron rich hematite/magnetite rock
- Development plan: open pit mining operation producing 5,000t tin metal in concentrate pa with initial mine life of 10 years
- Target 8-10 Mt @ average tin grade 0.5%-0.6%\*1
- **Current JORC Tin Resource 7.4 Mt @ 0.6% tin**
  - Gillian: 3.00 Mt @ 0.80% Tin incl. 1.2 Mt Measured
  - Pinnacles: 1.87 Mt @ 0.41% Tin
  - Windermere: 2.50 Mt @ 0.55% Tin
- Project well positioned relative to major road, rail & port infrastructure
- Project also has a **JORC Iron Resource** of 5.3 Mt that may be beneficiated to + 60% Magnetite by product
- Significant upside in exploration potential with low tin production costs of approximately AU\$11,500 per tonne
- Preliminary scoping study completed which shows positive project economics

\*1 Target mineralisation: This exploration target is conceptual in nature as insufficient drilling has been undertaken at this stage & it is uncertain that future drilling will result in the determination of this target. 8

# Highlight Results

## **GILLIAN**

- |                            |       |                      |        |
|----------------------------|-------|----------------------|--------|
| • 23.0 metres @ 1.40 % Tin | Depth | 7.0 to 30.0 metres   | HD 262 |
| • 19.8 metres @ 1.34 % Tin | Depth | 1.2 to 21.0 metres   | HD 252 |
| • 28.5 metres @ 0.93 % Tin | Depth | 82.5 to 111.0 metres | HD 259 |
| • 20.0 metres @ 0.93 % Tin | Depth | 17.0 to 37.0 metres  | HD 257 |
| • 25.9 metres @ 0.80 % Tin | Depth | 30.1 to 56.0 metres  | HD 261 |

## **WINDERMERE**

- |                            |       |                     |       |
|----------------------------|-------|---------------------|-------|
| • 11.0 metres @ 1.22 % Tin | Depth | 0.0 to 11.0 metres  | H 144 |
| • 15.0 metres @ 0.63 % Tin | Depth | 35.0 to 50.0 metres | H 148 |
| • 9.0 metres @ 0.60 % Tin  | Depth | 31.0 to 40.0 metres | H 209 |
| • 4.0 metres @ 1.16 % Tin  | Depth | 20.0 to 24.0 metres | H 188 |

## **PINNACLES**

- |                            |       |                     |       |
|----------------------------|-------|---------------------|-------|
| • 8.0 metres @ 2.36 % Tin  | Depth | 22.0 to 30.0 metres | H 013 |
| • 15.0 metres @ 0.61 % Tin | Depth | 28.0 to 43.0 metres | H 042 |
| • 8.0 metres @ 0.55 % Tin  | Depth | 13.0 to 21.0 metres | H 055 |

# Gillian Tin intersections

Hole No	Downhole Intercept	Length and Grade
Hole 1	35-45 metres	10 metres @ 0.82% Sn
<b>Hole 4</b>	<b>14-27 metres</b>	<b>13 metres @ 2.02% Sn</b>
<b>Hole 7</b>	<b>14-35 metre</b>	<b>21 metres @ 1.14% Sn</b>
<b>Hole 27</b>	<b>0-15 metres</b> <b>45-58 metres</b>	<b>15 metres @ 1.31% Sn</b> <b>13 metres @ 0.59% Sn</b>
Hole 32	18-79 metres	61 metres @ 0.75% Sn
Hole 82	14-37 metres	23 metres @ 0.71% Sn
<b>Hole 83</b>	<b>16-43 metres</b>	<b>27 metres @ 1.1% Sn</b>
<b>Hole 84</b>	<b>30-57 metres</b>	<b>27 metres @ 1.09% Sn</b>
<b>Hole 93</b>	<b>20-30 metres</b>	<b>10 metres @ 0.88% Sn</b>
Hole 94	4-47 metres	43 metres @ 0.71% Sn
<b>Hole 95</b>	<b>34-70 metres</b>	<b>36 metres @ 1.2% Sn</b>
Hole 96	53-66 metres	13 metres @ 0.9% Sn
Hole 104	8-18 metres	10 metres @ 0.81% Sn
Hole 108	18-35 metres	17 metres @ 0.73% Sn
Hole 109	17-28 metres	11 metres @ 0.74% Sn
<b>Hole 127</b>	<b>72-95 metres</b>	<b>23 metres @ 1.01% Sn</b>
Hole 128	16-27 metres	11 metres @ 0.74% Sn
<b>Hole 129</b>	<b>9-33 metres</b>	<b>24 metres @ 1.45% Sn</b>
<b>Hole 135</b>	<b>29-44 metres</b>	<b>15 metres @ 1.02% Sn</b>
Hole 136	48-68 metres	20 metres @ 0.84% Sn

# JORC Resource Table

<b>TIN (Sn)</b>	Measured tonnes	Grade %	Indicated tonnes	Grade %	Inferred tonnes	Grade%	Total tonnes	Grade %	
Gillian	1,203,000	0.82	824,100	0.73	974,100	0.77	<b>3,001,200</b>	<b>0.78</b>	
Pinnacles - Wafer	-	-	218,200	0.49	1,133,100	0.39	<b>1,351,300</b>	<b>0.41</b>	
Pinnacles - Sniska	-	-	-	-	306,900	0.32	<b>306,900</b>	<b>0.32</b>	
Pinnacles - Hartog	-	-	-	-	212,700	0.51	<b>212,700</b>	<b>0.51</b>	
Deadmans Gully	-	-	401,500	0.49	-	-	<b>401,500</b>	<b>0.49</b>	
Windermere	-	-	-	-	2,103,000	0.55	<b>2,103,000</b>	<b>0.55</b>	
<b>SUBTOTAL</b>	<b>1,203,000</b>	<b>0.82</b>	<b>1,443,800</b>	<b>0.63</b>	<b>4,729,800</b>	<b>0.54</b>	<b>7,421,643</b>	<b>0.60</b>	= 44,530t Sn
*Jeannie River	-	-	-	-	2,240,000	0.60	<b>2,240,000</b>	<b>0.60</b>	= 13,440t Sn
<b>*TOTAL</b>	<b>1,203,000</b>	<b>0.82</b>	<b>1,443,800</b>	<b>0.63</b>	<b>6,969,800</b>	<b>0.56</b>	<b>9,661,643</b>	<b>0.60</b>	= 57,970t Sn

<b>IRON (Fe)</b>	Measured tonnes	Grade %	Indicated tonnes	Grade %	Inferred tonnes	Grade %	Total tonnes	Grade %
Gillian	1,203,000	31.35	824,100	29.75	974,100	27.67	<b>3,001,200</b>	<b>29.72</b>
Pinnacles - Wafer	-	-	218,200	20.21	1,133,100	27.88	<b>1,351,300</b>	<b>16.87</b>
Pinnacles - Sniska	-	-	-	-	306,900	22.90	<b>306,900</b>	<b>22.90</b>
Pinnacles - Hartog	-	-	-	-	212,700	13.75	<b>212,700</b>	<b>13.75</b>
Deadmans Gully	-	-	401,500	34.89	-	-	<b>401,500</b>	<b>34.89</b>
<b>TOTAL</b>	<b>1,203,000</b>	<b>31.35</b>	<b>1,443,800</b>	<b>29.73</b>	<b>2,626,800</b>	<b>26.08</b>	<b>5,273,600</b>	<b>25.78</b>

\*Subject to finalisation of title transfer

# Development Path

## Proposed Development Path:

<b>Q3/Q4 2011</b>	Increased Drilling
	Metallurgy testwork continues
<b>Q1 2012</b>	Resource review
	Pre-Feasibility Study
<b>Q2 2012</b>	Feasibility Study
<b>Q3/Q4 2012</b>	JV partner & funding discussions
<b>Q4 2012</b>	Project construction
<b>Q4 2013</b>	Production 1Mtpa producing 5,000t Sn pa

# Corporate Overview

**CONSOLIDATED**  
TIN MINES LTD

## Issued Capital

ASX Code:	CSD
Shares:	165.8 m
Listed Options:	53.5 m (exercisable @ \$0.20 on/before 31/12/2013)

## Price & Capitalisation

Share price:	6c (01/12/11)	Snow Peak:	12.06%
12 month high:	28c	Beacon Minerals:	9.47%
Mkt. Cap:	\$9.95m	Geocrystal Ltd:	6.63%
Cash position:	\$1.8m (30/09/11)	Top 20 hold:	59.98%
		Number of shareholders:	1,120

## Share Register

## Board of Directors

Mr Ralph DeLacey	Chairman/Managing Director, has over 20 years experience in mine and exploration management specialising in north Queensland
Mr. Andrew Kerr	Non-Executive Director, B.Sc (Law) and specialises in Native Title and Cultural Heritage, Planning and Environmental & Mining Law
Mr. Darryl Harris	Non-Executive Director, B.Sc (Metallurgy) a engineering metallurgist with more than 30 years experience in the development, design and commissioning of various metallurgical plants, across a range of different commodities

# Why invest in CSD

- Solid management team with clear development objective to bring the project to production
- Advanced quality tin projects
- Known area of tin potential with substantial previous investment on exploration/drilling
- Opportunity for expansion on life of project through potential resource increases in the region
- Near surface low cost mining operation targeted
- Stable Australian mining policies

**Significantly undervalued compared to Peers**

# Contact Details

Ralph De Lacey  
Managing Director  
Consolidated Tin Mines Limited  
Ph: (07) 4032 3319  
Fax: (07) 4027 9429  
Mob: +61 428 163 176  
E: [rd@csdtin.com.au](mailto:rd@csdtin.com.au)

Darryl Harris  
Director  
Consolidated Tin Mines Limited  
Ph: (07) 4032 0123  
Fax: (07) 4027 9435  
Mob: +61 419 908 645  
E: [dh@csdtin.com.au](mailto:dh@csdtin.com.au)

*The information contained in this report that relates to assay results of rock samples & drill chips, to mineral resource estimates & to ore reserve estimates of mineralization is based on information compiled by John Sainsbury (BSc, AusIMM). John Sainsbury is a geologist of 30 years experience & has sufficient experience in the type of mineralisation under consideration to qualify as a Competent Person as defined by the Australasian Code for Reporting of Exploration Results, Mineral Resources & Ore Reserves - JORC Code, 2004 Edition. John Sainsbury is a full time employee of Consolidated Tin Mines Limited & has consented to the inclusion of this information in the form & context in which it appears.*